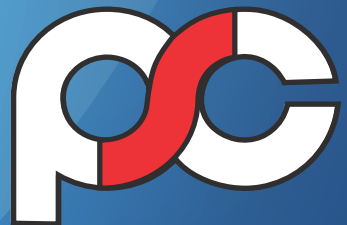


► **INSTRUMENT  
TRANSFORMERS**

---

► **ENCLOSURES**



**PERFECT SALES CORPORATION**



# Low Tension Instrument Transformers

## Applications

Low Tension Current Transformers are suitable for measuring current in energy meters and switchgear panels with rated frequency 50Hz or 60Hz with nominal system voltage 415 V.

Applicable Standards – IEC61869 and IS16227

## Structure and Feature

- Epoxy resin cast for indoor or Cycloaliphatic cast for outdoor purposes
- Zero hassle in maintenance
- Special provision for mounting
- Customized structures as per your requirement.
- Excellent performance

## Ratings

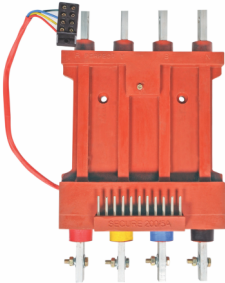
|  |   |  |
|--|---|--|
| Rated Primary Current                  | : | 10000Amp (Max)                                 |
| Rated Secondary Current                | : | 5Amp, 1Amp, 0.577Amp                           |
| Nominal System Voltage                 | : | Up to 0.66kV                                   |
| No. of Secondary Cores                 | : | As per customer requirement and specifications |
| CT Rated accuracy Classes              | : | 0.1, 0.2, 0.2s, 0.5, 0.5s, 1.0, 3.0            |
| CT Rated accuracy Classes - Protection | : | 5P5, 5P15, 5P20, 10P10, 10P15, 10P20           |



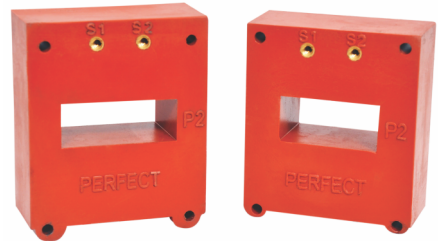
Ring Type



Nylon Casing



3 Phase CT



Bar Type



Tape Wound



## Medium voltage instrument transformers

### Applications

Medium voltage current transformers are suitable for measuring current in energy meters and switchgear panels with rated frequency 50Hz or 60Hz with nominal system voltage up to 33KV. They are intended to supply electrical measuring instruments, meters, relays or other protection devices.

### Structure and Feature

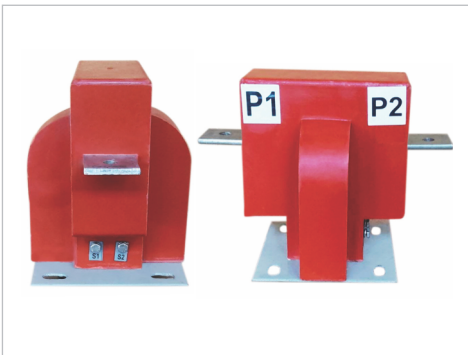
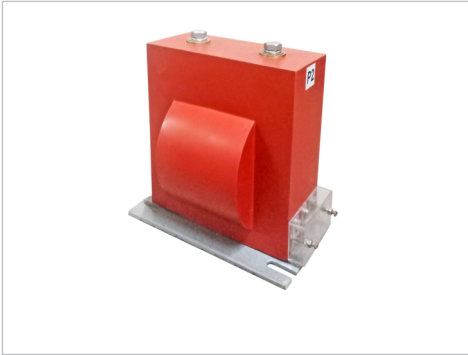
- Epoxy resin cast for indoor or Cycloaliphatic cast for outdoor purposes
- Zero hassle in maintenance
- Special provision for mounting
- Customized structures as per your requirement
- Excellent performance
- High quality paper-oil insulation
- Oil expansion by stainless steel bellows
- Oil level indicator
- Changing of primary ratio by secondary taps
- Ambient Temperature: -30 to 50 ° C
- Mechanical Strength : As per IEC 61869
- Metal Parts treated for corrosion resistance by PU paint and Hot Dipped Galvanizing Process

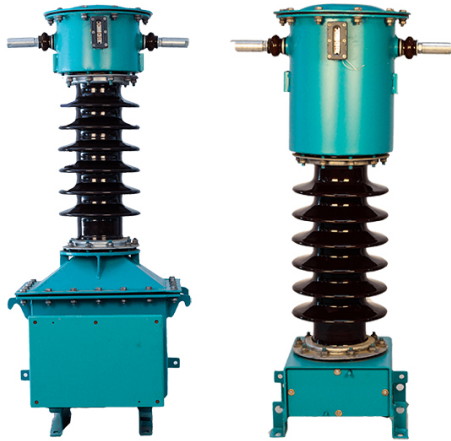
### Ratings

|  |   |                                      |
|--|---|--------------------------------------|
| Maximum System Voltage                 | : | 36kV                                 |
| Rated Frequency                        | : | 50Hz, 60Hz                           |
| Maximum Insulation level               | : | 36/70/170 kV                         |
| Rated Continuous Thermal Current       | : | 120%, 150%, 200%                     |
| CT Rated accuracy Classes              | : | 0.1, 0.2, 0.2s, 0.5, 0.5s, 1.0, 3.0  |
| CT Rated accuracy Classes - Protection | : | 5P5, 5P15, 5P20, 10P10, 10P15, 10P20 |

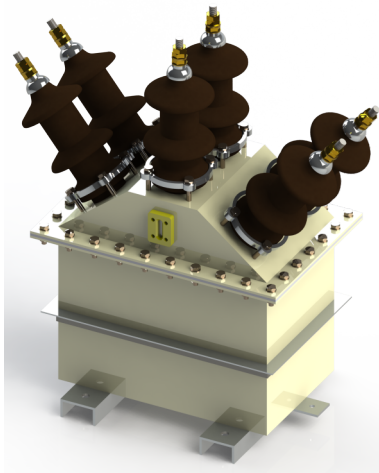


## Epoxy cast Instrument Transformers





Oil Cooled CT



Combined CT PT unit



## ENCLOSURES AND METERING CUBICLES

We Design, engineer, assemble and manufacture Metering Panel. Our standard panel is dust and vermin proof and totally enclosed with MS Sheet. It has two separate compartments; the upper one shall house for energy meter with associated wiring and shall be termed as “Meter compartment”. The other section i.e. lower compartment shall house the 1Ph, dry type epoxy resin casted CT (3 Nos.) and, 1 Ph, dry type epoxy resin casted PT (3 Nos.) or 1 no. 3ph PT shall be termed as “HT CT/PT compartment”. A separate and independent vermin proof door is provided for each of the upper and lower compartments with provision of locking and sealing arrangement.

There shall be one fixed glass window fitted with transparent acrylic glass to enable the meter reader to note down the reading without opening the door of the panel.

Apart from this, we design and manufacture metering panels as per customer specification. All panels confirm to IEC 61869-1 & 2.



## Low tension Metering cubicle

### Applications

LT – CT metering panel is suitable for measuring energy consumption and current in electrical distribution grids with rated frequency 50Hz or 60Hz with nominal system voltage 415 V. The panel are available for both 1-phase and 3-phase systems.

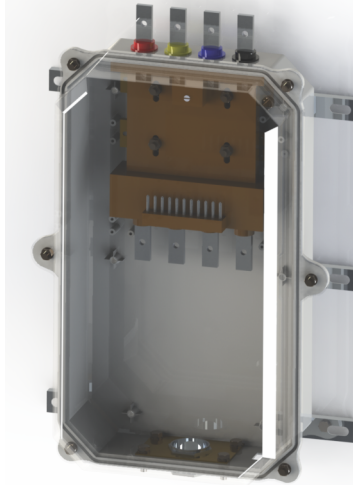
Applicable Standards – IEC61869, IS16227 and IS14772 - 2000

### Structure and Feature

Metallic or Polycarbonate enclosure fitted with 4 numbers single phase epoxy cast Current transformers or 1 number epoxy cast 3 phase Current transformer.

The polycarbonate enclosure is fire retardant, self extinguishing, UV stabilized with anti oxidation properties.





**3 phase CT inside Polycarbonate cubicle**



**LT-CT Metering Cubicle**



## Pilfer Resistant HT Metering Cubicle up to 33 KV

### Applications

Pilfer Resistance Metering Cubicle is suitable for measuring energy consumption and current in electrical distribution grids with rated frequency 50Hz or 60Hz with nominal system voltage up to 33KV.

Applicable Standards – IEC61869, IS16227 and IS3427 – 1997

### Structure and Feature

CT-PT bank consisting of 3 number single phase epoxy cast Current transformers and 1 number - 3 phase epoxy cast PT or 3 numbers 1 phase epoxy cast PT inside metallic enclosure.



Medium Voltage Metering Cubicle



## Polycarbonate Enclosures

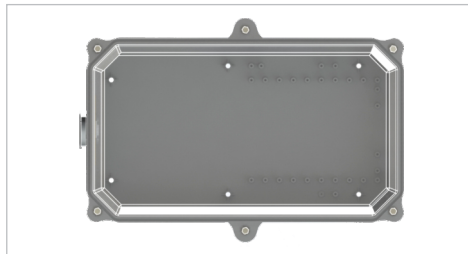
### Applications

Polycarbonate enclosures are suitable for accessories for household and similar fixed electrical installations, low voltage switchgear and control gear assemblies and energy meters

Applicable Standards – UL 746C and IS14772 - 2000

### Structure and Feature

Polycarbonate enclosures are fire retardant, self extinguishing, UV stabilized with anti oxidation properties. They are weather proof and tamper proof.



# PERFECT SALES CORPORATION

Email : [info@perfectcpt.com](mailto:info@perfectcpt.com)  
Visit us: [www.perfectsalescorporation.com](http://www.perfectsalescorporation.com)

## **Manufacturing Unit :**

Plot No. 12, Sector- IIDC, IIE-Pant Nagar,  
SIDCUL, Rudrapur (Uttarakhand)  
Tel.: 05944 - 250299, 250529

## **Sales Office :**

B-255, Okhla Industrial Area,  
Phase-I, New Delhi-110020  
Tel.: 011 - 26812623, 41612623